

安全须知

- 安装前请仔细阅读此说明书。
- 如果不遵守如下注意事项，可能会导致严重安全事故。因此，请严格遵守：
- 安装完成后，请检查产品是否正常运行。
- 客户应尽可能保留此说明作为以后的参考。

注意

- * 安装前，请再次检查在交付期间产品是否有裂缝或损坏。
- * 安装完成后，请确保试用产品，并检查产品是否有任何裂缝或损坏。
- * 产品出现任一裂缝都可能导致人身伤害、产品损坏、污物泄漏弄脏地板。

- 请勿过度拧紧螺栓。陶瓷本体易开裂，可能会对安装人员或用户造成伤害。

使用条件：

1. 最小水压：0.07 Mpa及以上（水流时）
2. 最大水压：0.75 Mpa及以下（静止时）

注意：如果水压低于最低要求，水流量不够强，会影响冲洗功能。

SAFETY PRECAUTIONS

- Read the instructions carefully before beginning.
- Cautions and notes below if not complied may lead to serious damage. Therefore, please follow strictly.
- After finishing installation, check out whether the facility operates properly or not.
- If possible, customer should to keep this instruction as reference in the future.

ATTENTION

- * Before installation, please check the product again for cracks or breaks during delivery
- * Be sure to test operation and check for any breaks, cracks after installation has been completed.
- * Any cracks may cause injury, damage, leakage or dirty the floor.

- Do not overtighten bolts. Porcelain is subject to cracking, which may cause injury to installing person or users.

CONDITION OF USE

1. Minimum pressure: 0.07 Mpa or above (Flowing)
2. Maximum pressure: 0.75 Mpa or below (static).

Note: If the water pressure is under minimum requirement, the water flow is not strong enough, which will affect the flushing function.

所有安装步骤必须符合当地法律法规和建筑规范！

ALL INSTALLATION PROCEDURES MUST COMPLY IN TRICT ACCORDANCE WITH THE LOCAL PLUMBING AND BUILDING CODE

维护保养须知

不要使用刺激性或腐蚀性研磨剂清洁产品表面。温和的洗涤剂，温水和软布可以清洁产品表面和配件上的污垢。清洁后彻底冲洗并用柔软的干布擦干，使产品恢复原有的光泽。

注意：

不要在水箱中使用清洁剂。含氯（次氯酸钙）的产品会严重损坏配件。这种损坏可能导致产品泄漏和破坏。

CARE AND MAINTERNANCE

Do not use harsh abrasives or caustic clean fixture surface. A mild detergent, warm water ,and a soft cloth will remove normal dirt and soap accumulations from fitting and surfaces. Rinse thoroughly after cleaning and polish with a soft dry cloth to restore original luster of material.

Notice:

Do not use cleaners in tanks. Products containing chlorine (calcium hypochlorite) can seriously damage the fittings. This damage can cause leakage and property damage.



扫一扫，
精彩活动随时享！

售后热线: 400 821 8661

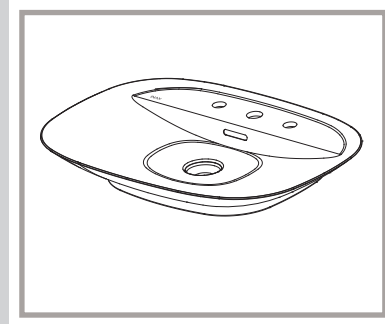
立即订购: www.inax.com.cn

伊奈S640艺术盆 / GIX FUJITORA vessel basin

安装&使用说明书

INSTALLATION & USER MANUAL

CLS640CF1-6DF10-A

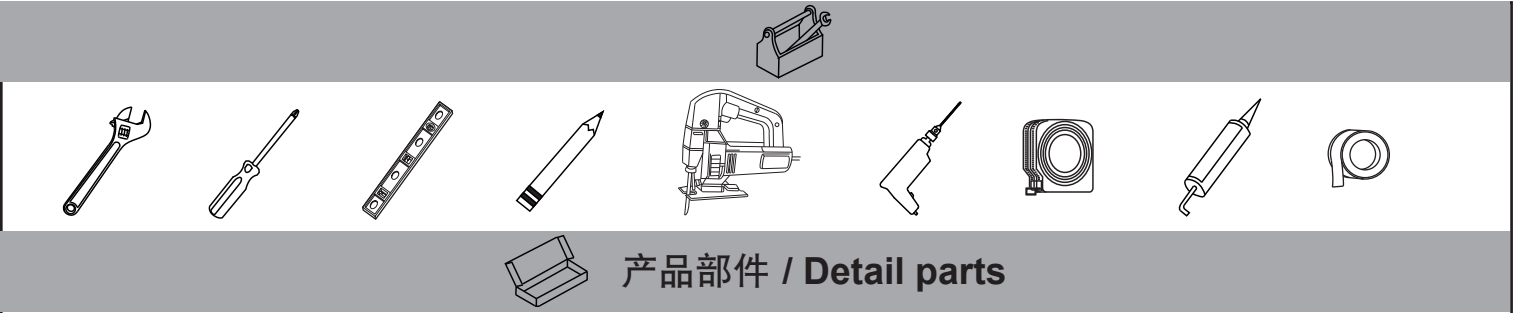


INAX

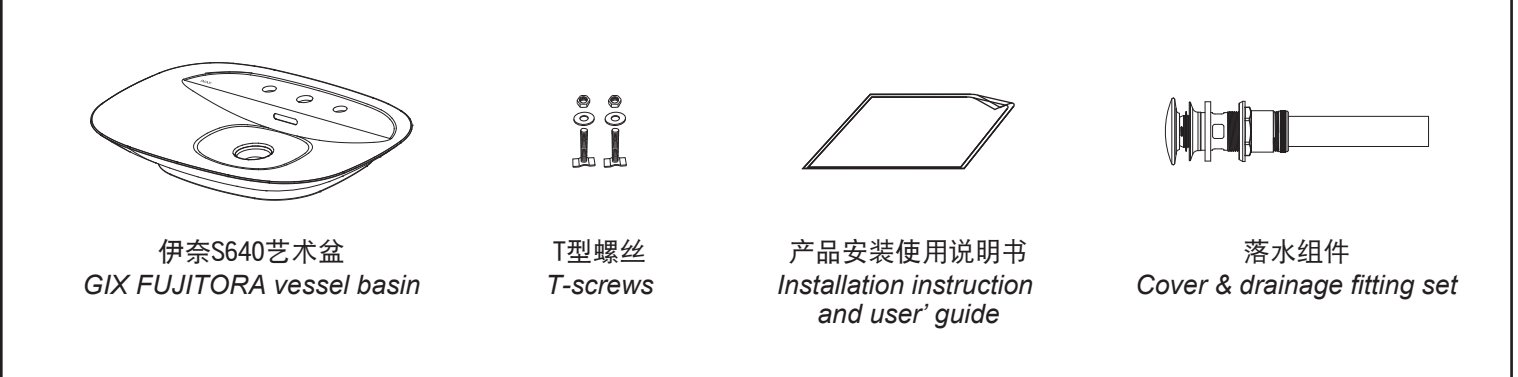
日本技术
ISO 9001:2015
ISO 14001:2015

感谢您使用伊奈卫生洁具。请您在开始安装前仔细阅读此说明书，安装完成后请进行调试。请将此说明书交予客户，并向客户解释、指导产品的使用方法。

Thank you for using INAX sanitary ware. Carefully read the manual for correct installation. Test run after installation. Give this installation and usage instruction to the customer and explain to the customer the operating mode.



产品部件 / Detail parts



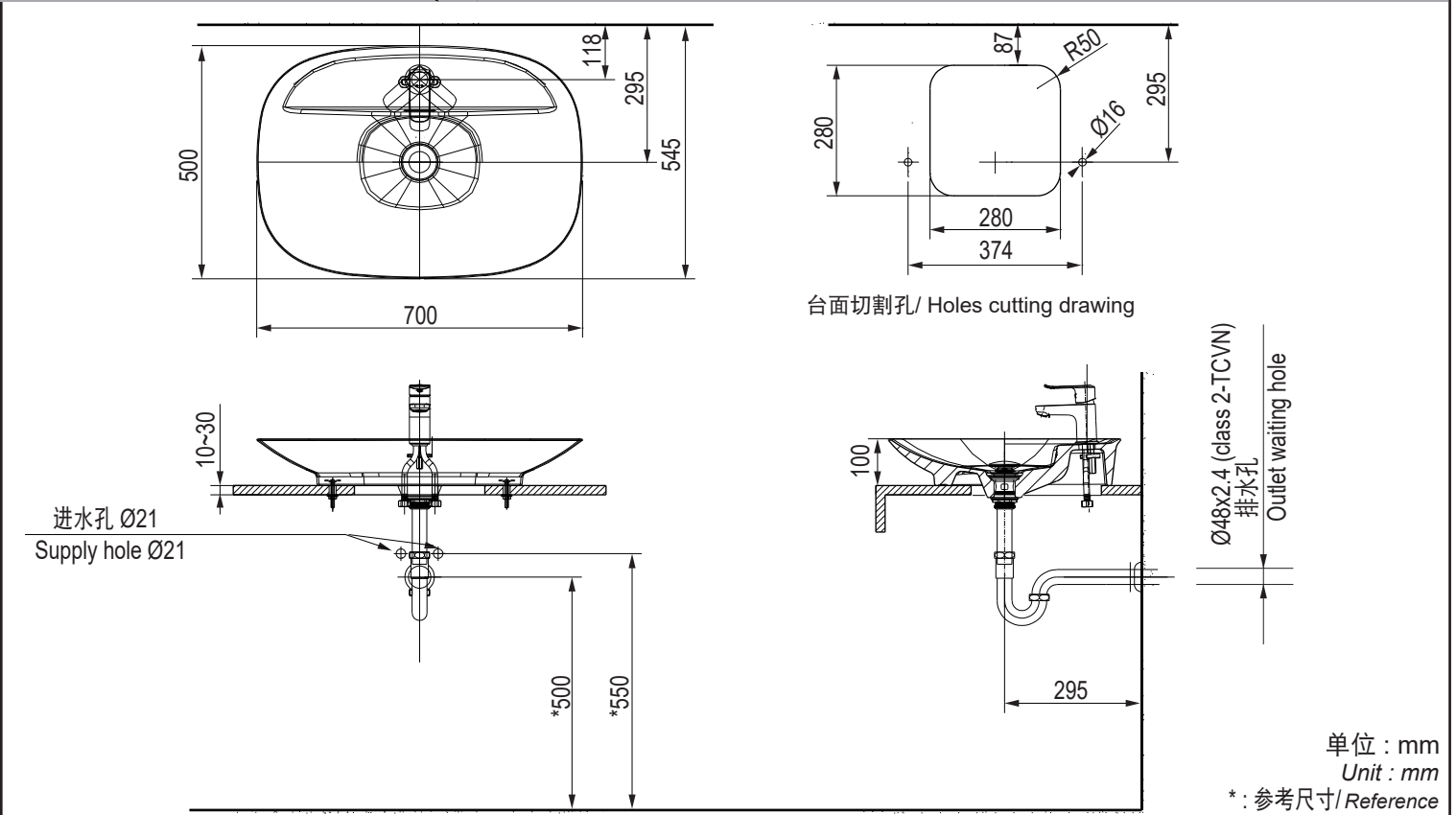
伊奈S640艺术盆
GIX FUJITORA vessel basin

T型螺丝
T-screws

产品安装使用说明书
Installation instruction
and user' guide

落水组件
Cover & drainage fitting set

安装图纸 / Installation drawing



单位：mm
Unit：mm

*: 参考尺寸 / Reference

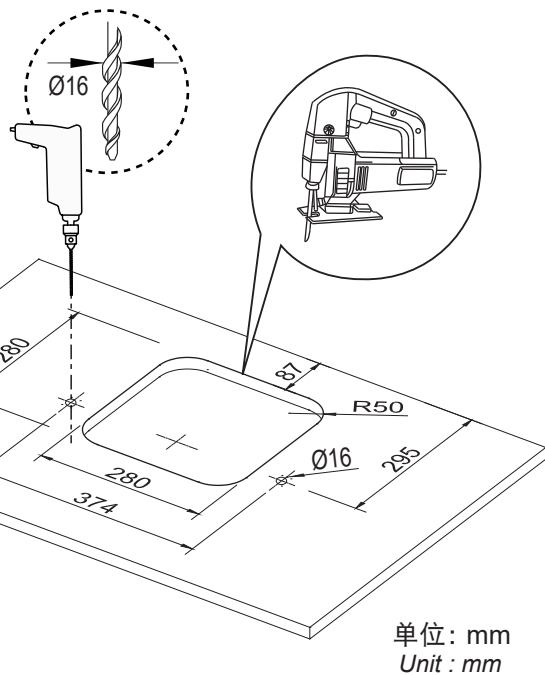


1

在台面上钻孔安装碗盆 / DRILL HOLES ON THE COUNTER TO INSTALL THE LAVATORY

- 如图所示尺寸标记碗盆在台面上的安装位置。
- 在台面上切割碗盆落水组件孔，并钻两个用来固定直径16mm的T型螺丝的孔。

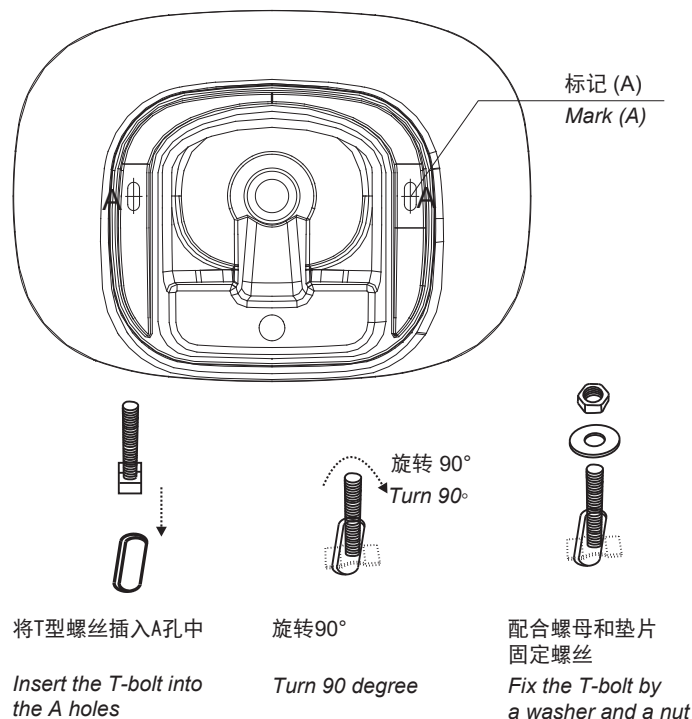
- Mark the installation position on the counter as dimensions below.
- After that, cut one hole for drainage, faucet and drill two holes for Ø16 fixing T-bolts.



2

在碗盆内部安装T型螺丝 / INSTALL T-BOLT INTO THE LAVATORY'S BODY

- 倒置碗盆，能看到2个孔（标记A）。
- 如下图所示安装T型螺丝。
- Turn the lavatory upside down, there are two holes (mark A).
- Installation with the reference of the figure below.

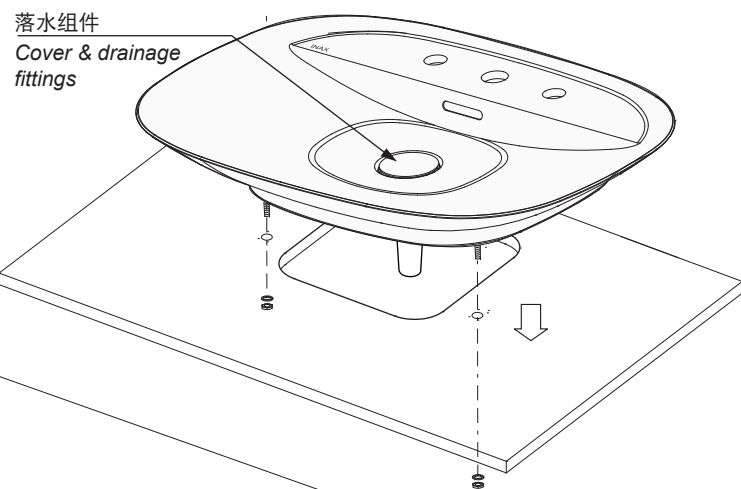


3

将碗盆安装到台面上 / INSTALL THE LAVATORY ON THE COUNTER

- 3.1. 根据说明书安装落水组件。
- 3.2. 将碗盆安装到台面上
- 把碗盆放入台面上钻的孔内。
- 拧紧T型螺丝螺母以固定碗盆。

- 3.1. Install Cover & drainage fitting with manual in the box.
- 3.2. install the lavatory on the counter
- Put the lavatory into drilled holes on the counter.
- Tighten the washers and nuts with T-bolts to fix the lavatory.

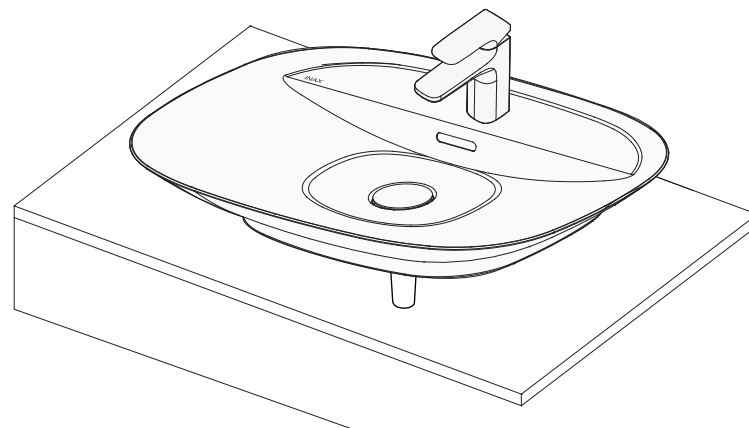


4

安装水龙头 / INSTALL THE FAUCET

- 根据用户需求选择一款适合的水龙头。
- 如果选择伊奈龙头，请依据龙头附带的安装说明书进行安装。
- 注意：确保在安装前冲洗龙头一段时间，彻底清洁内部水管。

- Depending on users' demand to choose a suitable faucet.
- If INAX faucets are chosen, please follow the installation manual attached in faucet.
- Note: Make sure to clean the pipes inside thoroughly before install by flushing for a while.



5

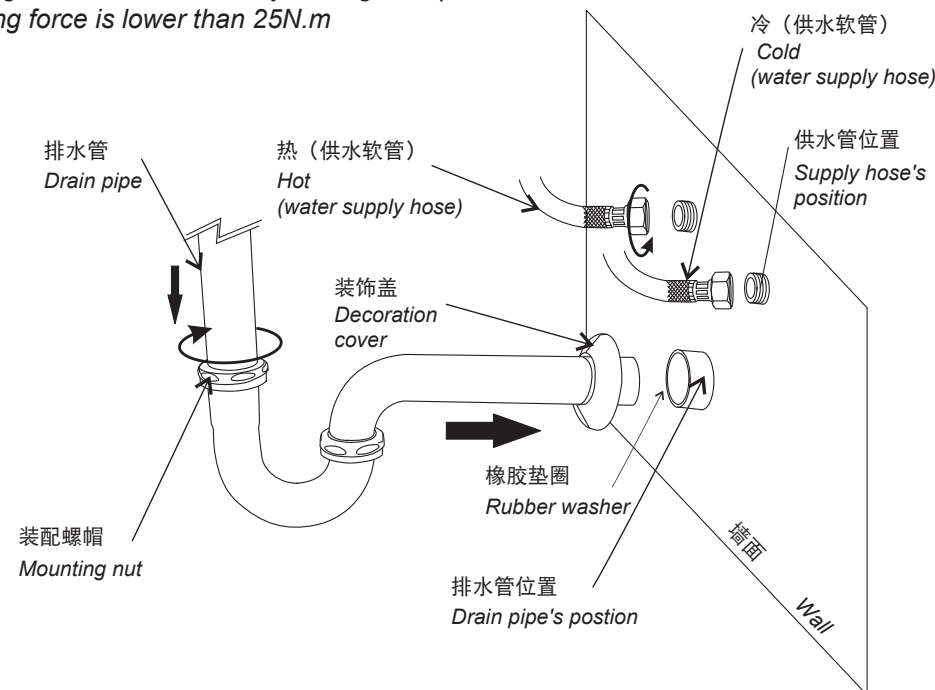
连接排水管和供水软管 / CONNECT DRAINAGE PIPE AND WATER SUPPLY HOSE

- 确保连通碗盆前，先完成进水软管和排水管的安装。
- 进水管和排水管请按照实际情况调整。
- 注意：
 - 不要过度拧紧，否则，产品可能受损。
 - 紧固力需小于25N·m。

- Ensure to finish installing water supply hose and pipe before connecting to the lavatory.
- The pipe is can be adjusted to desired fit.

Note:

- Do not overtighten, otherwise, it may damage the product.
- The tightening force is lower than 25N.m



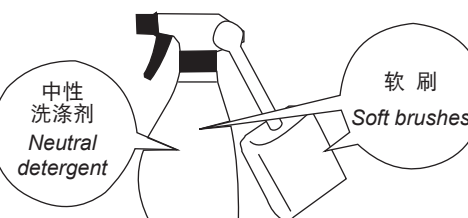
水渍超净产品使用指导 /

Instruction when using Aquaceramic Processed products

- 使用中性洗涤剂和软刷定期擦拭产品，不要刮花产品表面。
- 为了保证水渍超净的持久耐用，请**不要**使用以下清洁剂：
- * 强碱性清洁剂：PH≥11。
- * 含有抛光粉的清洁剂。
- * 可能会磨损陶瓷的刷子。

- Periodically rub the product with neutral detergent and soft brushes that do not scratch the product surface.
- * In order to remain long-lasting effect of Aquaceramic, please **DO NOT** use the following detergents:
 - Strong alkaline detergent with pH≥11.
 - Detergent with abrasive powder.
 - Rubbing brushes with abrasion.

请不要使用强碱清洁剂及可能磨损产品表面的清洁用品，否则釉面将受损严重！！
Please do not use strong alkaline detergent, detergent with abrasion because it will scratch the surface, glaze will be decayed !!



强碱清洁剂，可能磨损产品的清洁用品
Alkaline detergent, detergent with abrasion

